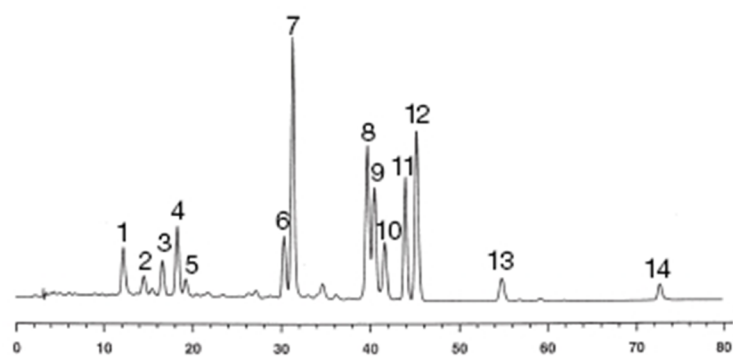


## Carotene and Xanthophyll standard A



- |                           |                             |
|---------------------------|-----------------------------|
| 1: Astaxanthin            | 8: 15-cis $\beta$ -Carotene |
| 2: Capsanthin             | 9: 13-cis $\beta$ -Carotene |
| 3: Lutein                 | 10: $\alpha$ -Carotene      |
| 4: Zeaxanthin             | 11: trans $\beta$ -Carotene |
| 5: Canthaxanthin          | 12: 9-cis $\beta$ -Carotene |
| 6: $\beta$ -Cryptoxanthin | 13: $\delta$ -Carotene      |
| 7: Echinenone             | 14: Lycopene                |

Column: YMC30, 250 x 4.6 mm i.d.

Eluent: A: MeOH/MTBE/H<sub>2</sub>O= 81/15/4 , B: MeOH/MTBE/H<sub>2</sub>O= 6/90/4

Gradient: 1-100 % B (90 min)

Flow: 1.0 ml/min

Detection: UV at 450 nm

Temperature: ambient